



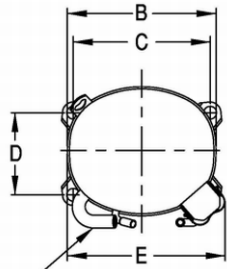
UNCONTROLLED COPY

KULTHORN KIRBY PUBLIC CO., LTD.

TECHNICAL SPECIFICATION

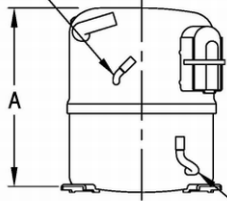
**HERMETIC
COMPRESSOR
WJ 2440ZK
BOM ID 81E-AO**

PRINCIPAL DIMENSIONS - mm



A	264
B	223
C	203
D	122
E	239

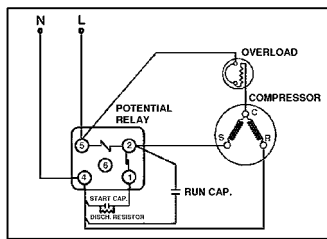
SUCTION TUBE 12.85 I.D.
PROCESS TUBE 7.95 I.D.



DISCHARGE TUBE 9.65 I.D.

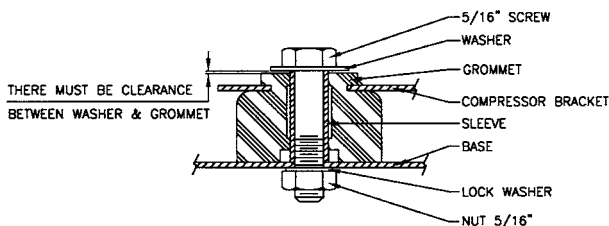
SCHEMATIC WIRING DIAGRAM

SCHEMATIC WIRING DIAGRAM C.S.R.



High Torque Start

MOUNTING KIT



THERE MUST BE CLEARANCE
BETWEEN WASHER & GROMMET

ELECTRICAL : 220-240 Volt. 50 Hz. 1 Phase

Nominal Performance

Cooling Capacity :	967	Watts (3,299)	BTU/Hr
	832	Kcal/Hr	
Power Input :	731	Watts	
Lock Rotor Amps :	30	Amps	
Rated Load Amps :	3.32	Amps	
COP (EER) :	1.32	W/W (4.51)	BTU/ W-Hr

Testing Conditions

Condensing Temperature :	54.4	° C
Evaporating Temperature :	-23.3	° C
Liquid Temperature :	32.2	° C
Return Gas Temperature :	32.2	° C
Ambient Temperature :	32.2	° C

Application

Evaporating Range :	LBP	@ -35 ° C to -12.2 ° C
Refrigerant :	R404A	
Expansion :	Capillary Tube	
Compressor Cooling :	Fan	

Compressor and Motor data

Compressor Type :	Reciprocating
Displacement :	24.20 cc.
Oil Type :	Polyolester Oil
Oil Charge :	850 cc.
Motor Type :	C.S.R. ; 2 Pole 2880 rpm
Voltage Range :	198-264 Volts 50 Hz.
Winding Resistance at 25 ° C	
Start :	6.22 Ohms
Run :	2.96 Ohms
Weight with Oil :	21.66 Kg.
Weight with Oil and Accessories :	22.40 Kg.

Electrical Components

Motor Protector :

Type :	External Overload 3/4"
Model Number :	KME 664-18/C
Open / Close :	115-125 70-52 ° C
1st Cycle trip :	23 Amps (start) Amps (main)

Motor Starter (CSR Only) :

Type :	Potential Relay
Model Number :	KGE 680 (GE3ARR3UX3AT2)
Pick Up :	186-215 Volts.
Drop Out :	40-90 Volts.
Terminal Cover :	KGM 901-1

Start Capacitor (CSR Only) : 145-174 μ F 330 VAC.

Disch. Resistor for Start Cap : 15000 Ohms 2 W

Run Capacitor : 25 μ F 440 VAC.

Mounting Kit

Rubber Grommet :	KGM 905
Sleeve Grommet :	KGM 903

Since we are constantly improving our product ,
the specification are subject to change without notice.

REV. DATE

15-08-11

C / N No.

0288/11